

Transport and Environment Committee

10am, Tuesday, 25 August 2015

Craigpark Crescent Play Area

Item number	7.2
Report number	
Executive/routine	
Wards	Pentland Hills

Executive summary

Following a petition to the Council from residents concerned about the decommissioning of a play park in Craigpark Crescent, Ratho Council officers have worked with the local community to design an improved facility for children and young people. Funding has now been secured to initiate works and The Friends of Craig Park established to support project design, implementation and ongoing site improvement.

Links

Coalition pledges	P33, P43, P48
Council outcomes	CO1, CO2, CO4, CO6, CO10, CO14, CO18, CO19, CO23, CO24, CO26,
Single Outcome Agreement	SO2, SO3, SO4

Craigpark Crescent Play Area

Recommendations

It is recommended that the Transport and Environment Committee:

- 1.1 Notes the progress made in responding to the petition to retain play facilities at Craigpark Crescent, Ratho.
- 1.2 Supports the design proposals drafted following community consultation.

Background

- 2.1 Due to its age, condition, location, and previous complaints, the Council's Play Area Action Plan recommended that Craigpark Crescent Play Park, Ratho, be phased out by 2014.
- 2.2 The Play Area Action Plan (2011 – 2016) was approved by the Policy and Strategy Committee at its meeting of 12 June 2012, with an instruction to refer the report to Neighbourhood Partnerships for information, and that where play areas are scheduled for removal, discussions be held with the Neighbourhood Partnership on possible alternative facilities.
- 2.3 Before these discussions were initiated, due to local concerns that the play area was to be removed and not replaced, a valid petition was heard by the Petitions Committee at its meeting of 4 September 2014. The Committee supported the petition to retain the play area whilst it remained in a safe condition, referring the item to the Transport and Environment Committee for further consideration.
- 2.4 At its meeting of 28 October 2014, the Transport and Environment Committee determined that the planned decommissioning of Craigpark Play Park be halted, instructing the Acting Director of Services for Communities to enter into discussions with the local community and report back with options for developing the play park and community space in Ratho Village. The Acting Director was also instructed to explore with the Acting Head of Planning and Building Standards the availability of Section 75 funding (developer contributions) for the project. This Report updates Committee on progress.

Main report

- 3.1 The play park in the community space at the centre of Craigpark Crescent, Ratho, consists of a swing and a roundabout. These items are 27 years old and nearing the end of their operational life. The Council's Play Area Action Plan recommended their removal due to age, as well as the existence of nearby play provision and previous complaints from local residents. However, as both the swing and a roundabout have recently passed engineering and independent inspections and are not deemed a public hazard, they remain in situ. They have also recently been re-painted in order to extend their operational life.
- 3.2 In the meantime, drop-in events at Ratho Community Centre and discussions with residents, youths, children and carers have explored retention and enhancement options for the community space, including the means of funding improvements or replacements. Interested residents have now formally registered with the Council as "The Friends of Craig Park" and, with Council assistance, have undertaken additional local consultation and hosted a public meeting on play park preferences. This has identified a desire for fencing, landscaping, play facilities for toddlers and juniors, and seating for adults. Formal registration of this Friends Group will allow staff to work with them to explore alternative sources of funding for further community space/play equipment improvements.
- 3.3 Due to the absence of a strategic Play Park capital budget, alternative means of resourcing the favoured play options have been investigated.
- 3.4 Section 75 funding (developer contributions) for Ratho has already been determined and none has been allocated for improvements to local parks.
- 3.5 The South West Neighbourhood supported an application for funding under the Neighbourhood Environment Programme and an award of £30,000 was approved by the Neighbourhood Area Board at its meeting of 19 March 2015, for community space improvements, including fencing, seating and soft landscaping/planting etc. However, this grant will not be sufficient to meet the community desire for new toddler and junior play provision.
- 3.6 Following receipt of feedback from the community consultation events, design options for improvements to the Craigpark Crescent community space have been drafted by Parks & Greenspace with input from Neighbourhood staff, and are currently part of continuing consultations with the Friends Group and other local residents and users. Once a final design option has been determined, the intention is to start improvement work on the community space by October 2015. The design will allow for play items to be added as and when additional funding becomes available.

Measures of success

- 4.1 Provision of an improved community space and a good quality upgraded or replacement play park for the local community.

Financial impact

- 5.1 £30,000 has been awarded to this project by the Neighbourhood Area Board.
- 5.2 On-going maintenance of the play items will be the responsibility of Parks & Greenspace. Associated costs will be met from the existing revenue budget.
- 5.3 On-going maintenance of the grass and other landscape features will be the responsibility of the South West Neighbourhood. Associated costs will be met from existing revenue budgets.

Risk, policy, compliance and governance impact

- 6.1 The retention of the Craigpark Crescent Play Park is contrary to the Council's Play Area Action Plan. The Action Plan is due for revision in 2016 and will be amended accordingly as part of the revision.

Equalities impact

- 7.1 Freedom to play is every child's right under article 31 of the United Nations Convention on the Rights of the Child (UNCRC). In 2013 the UN published General Comment number 17 on article 31, which expands and describes what the UNCRC means by the right to play.
- 7.2 Improved play facilities at Craigpark Crescent will bring this part of Ratho into compliance with the Play Space Access Standard contained in the Open Space Strategy 2010.
- 7.3 New community play facilities will have a positive impact on poverty and health inequalities, disability, maternity and age.

Sustainability impact

- 8.1 The continuation of The Friends of Craig Park following improvements to the play park will increase the likelihood of a sustainable future for the facilities.

Consultation and engagement

- 9.1 The Council held two drop in events at Ratho Community Centre: on 30 January 2015 to seek the views of young children and carers, and on 5 February 2015 to

seek the views of teenagers. As a result, the views of over fifty children and teenagers have informed the subsequent project design options.

- 9.2 Consultation forms were also widely circulated by the Friends Group. The results from 114 consultation forms were subsequently shared at a public meeting, from which the community priorities were identified as play facilities for toddlers (0-6 years old) and juniors (7-12 year olds), and seating for adults. This information has informed project design options.

Background reading/external references

[Play Area Action Plan](#)

[Report to Transport and Environment Committee 24 October 2014](#)

[Petition Committee Decision 4 September 2014](#)

John Bury

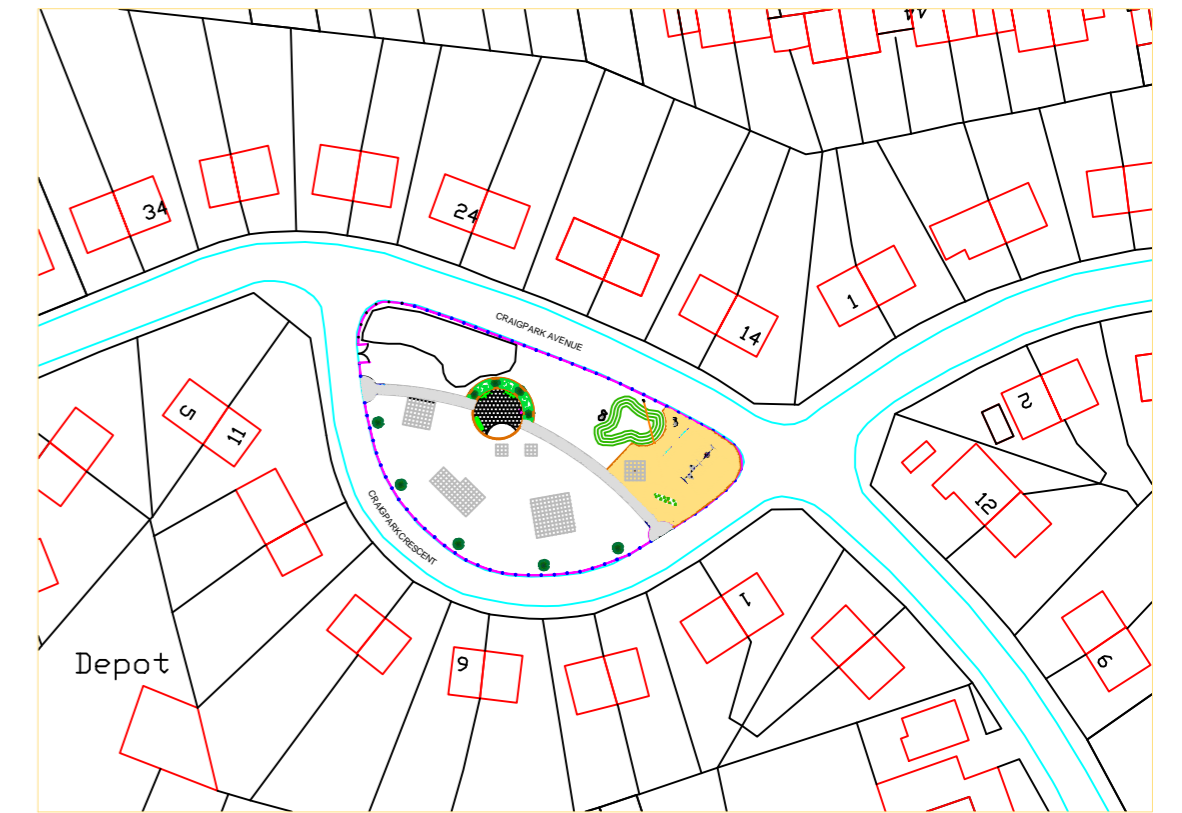
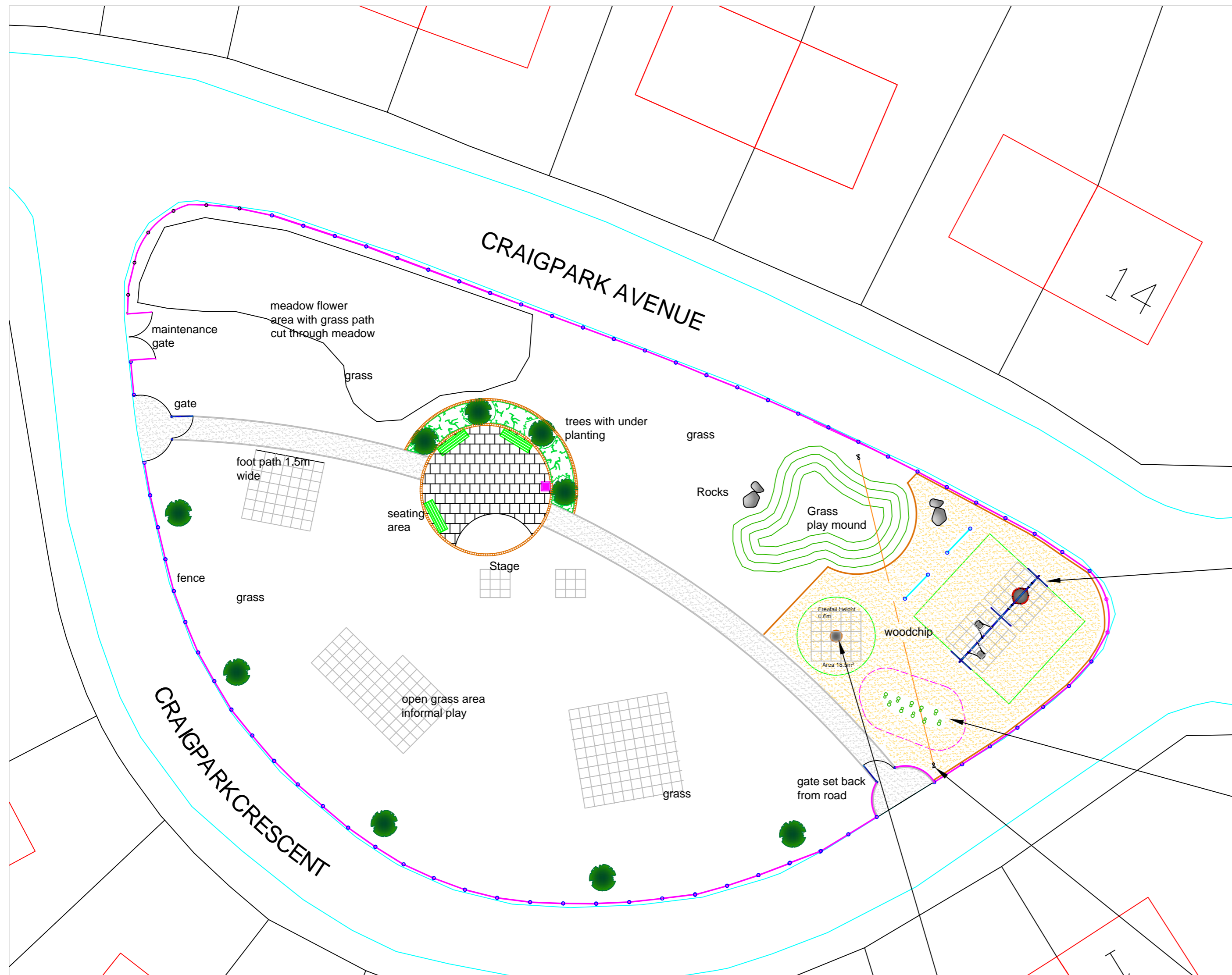
Acting Director of Services for Communities

Contact: David Jamieson, Parks & Greenspace Manager

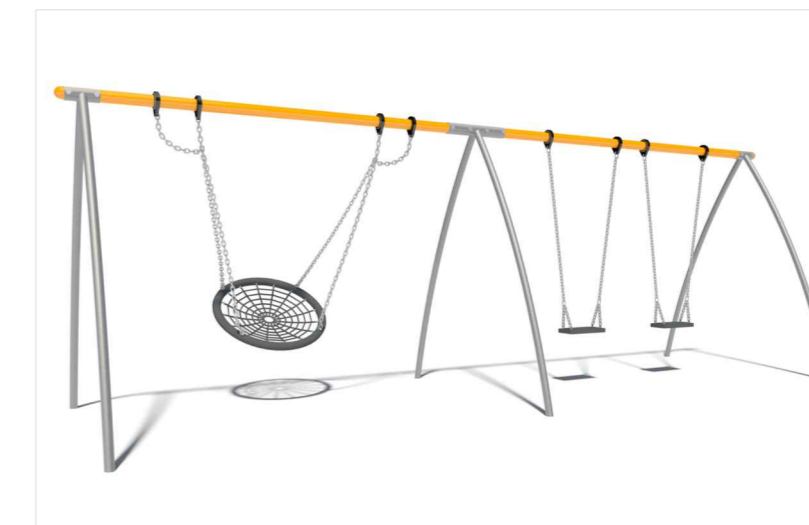
E-mail: david.jamieson@edinburgh.gov.uk | Tel: 0131 529 7055

Links

Coalition pledges	P33, P43, P48
Council outcomes	CO1, CO2, CO4, CO6, CO10, CO14, CO18, CO19, CO23, CO24, CO26
Single Outcome Agreement	SO2, SO3, SO4
Appendices	Design proposals A - D



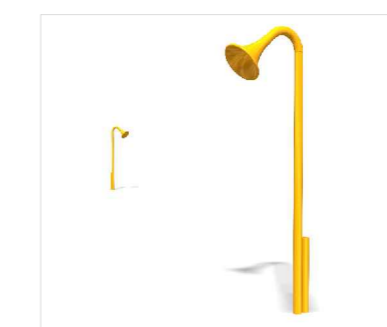
Location Plan not to scale



Swing unit 2 cradle seats one basket seat with tiles from old equipment under the woodchip surface



Stilt walk



talk tube



small roundabout

EDINBURGH
 THE CITY OF EDINBURGH COUNCIL
 SERVICES FOR COMMUNITIES
 PARKS and GREENSPACE
 Waverley Court
 4 East Market Street
 Edinburgh
 EH8 8BG

Title
**Craigpark Crescent
 Ratho Village**
 Proposal 1
 Appendix A

Nat: Grid Ref:	Scale 1:200
Date 06/05/2015	Drawn by J Galloway
District South West	Plan No:



Basket Swing with two flat seats



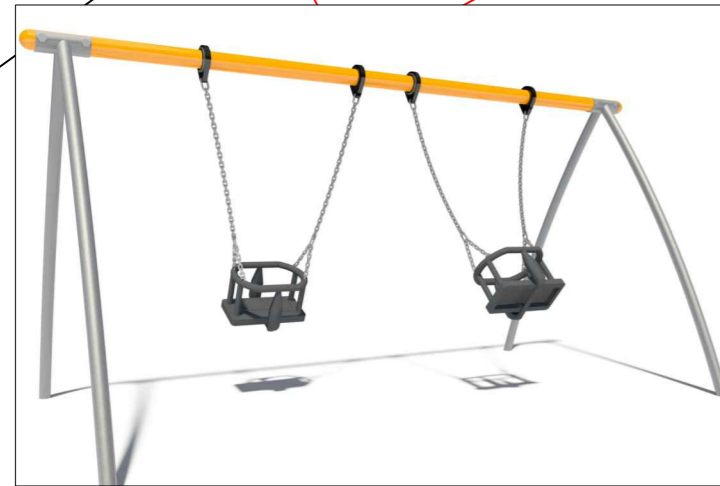
Multi play Unit Amico Alto



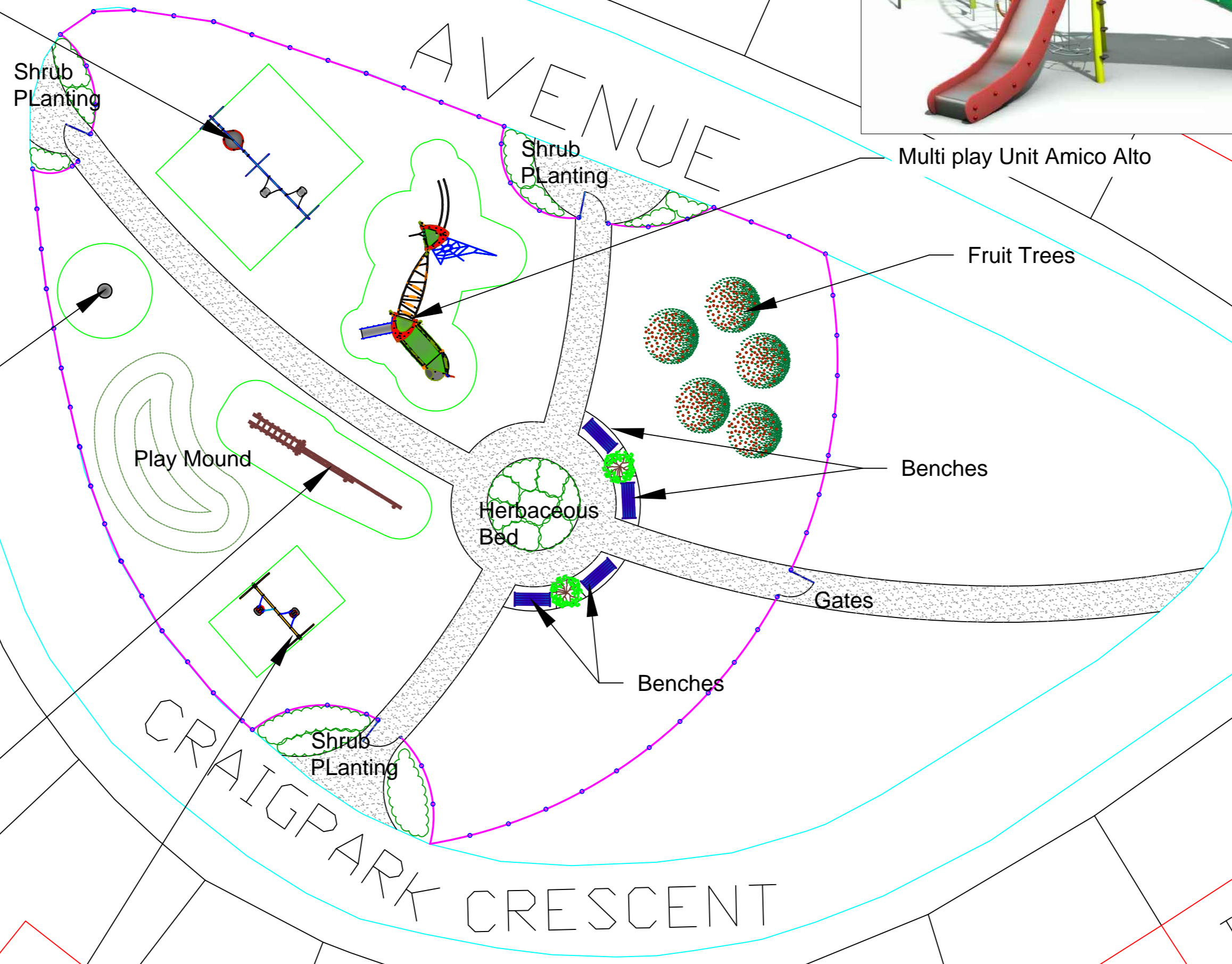
Infinity Bowl



Balancing Combination



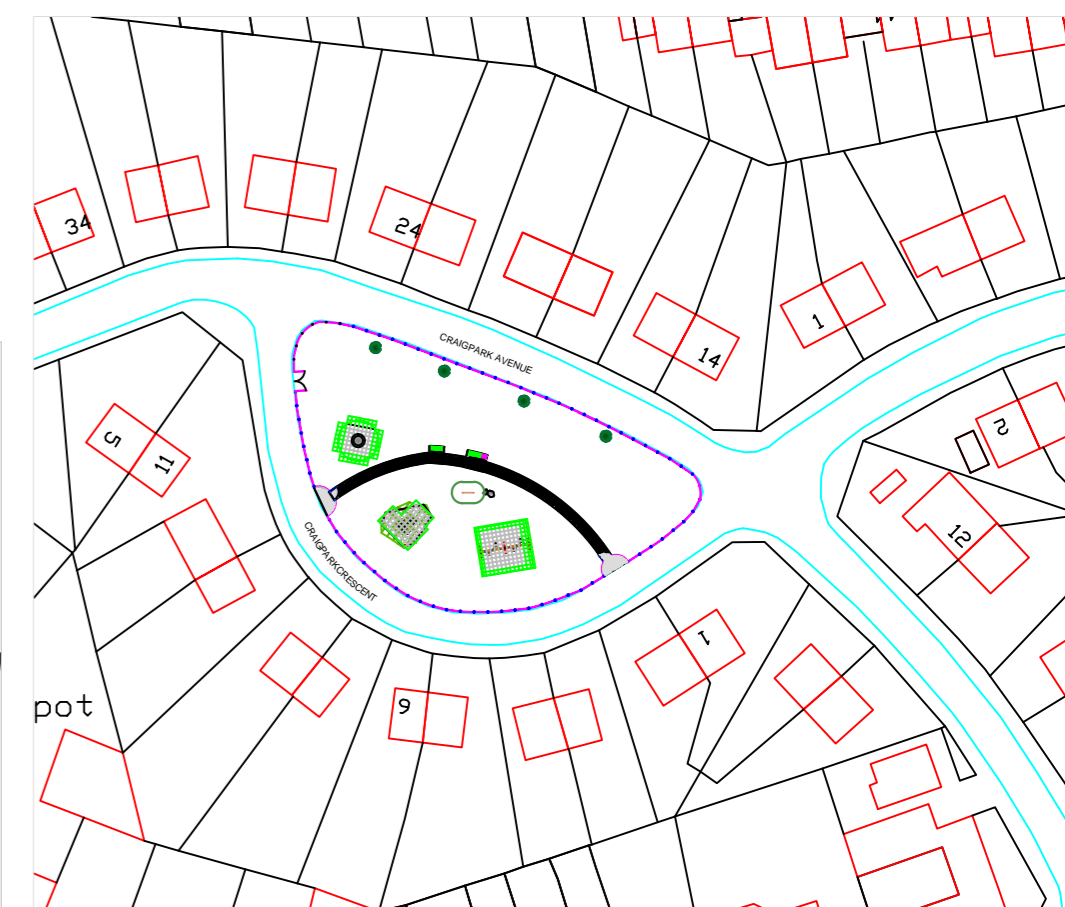
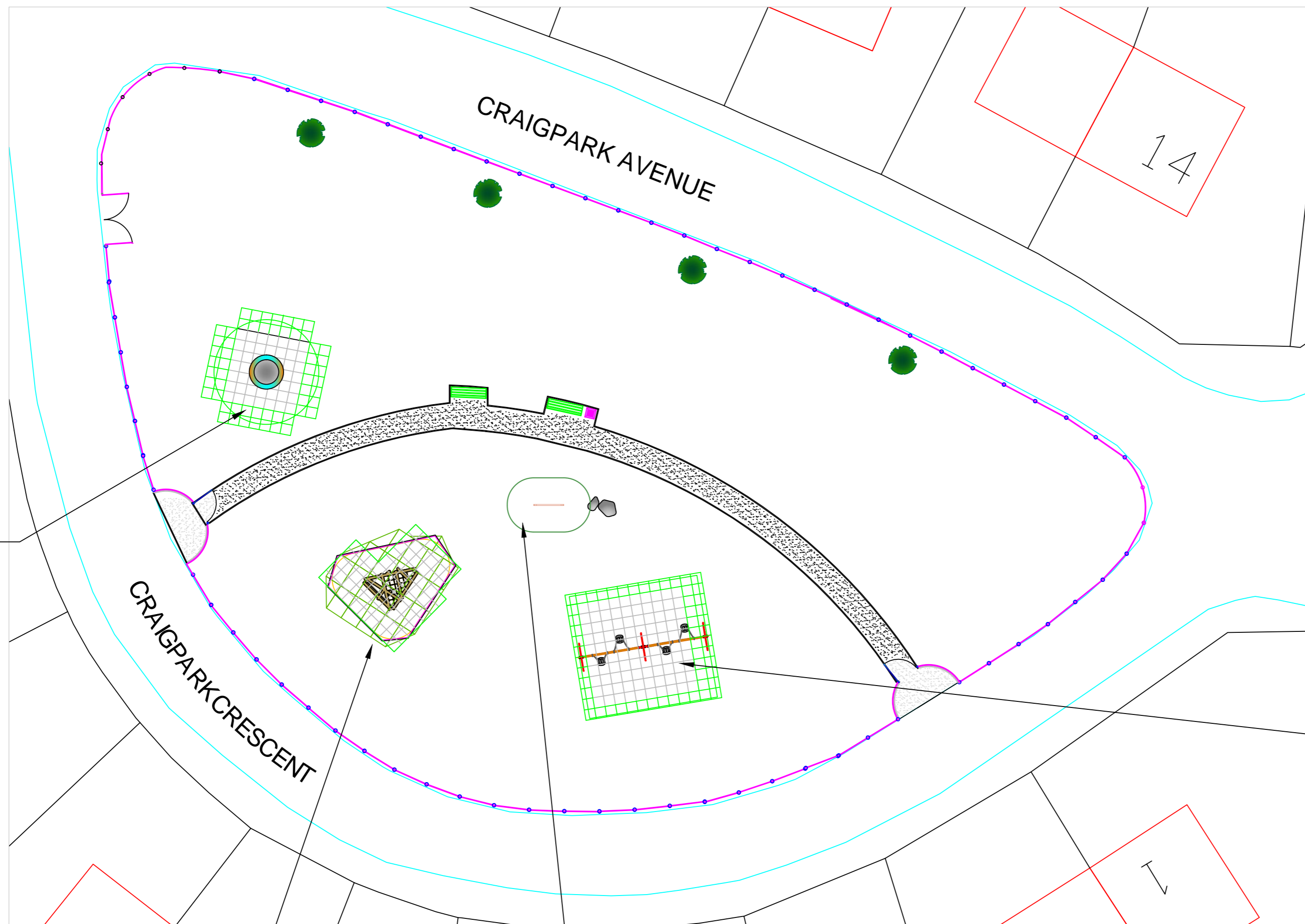
1.8m High swing with Cradles



EDINBURGH
 THE CITY OF EDINBURGH COUNCIL
 SERVICES FOR COMMUNITIES
 PARKS and GREENSPACE
 Waverley Court
 4 East Market Street
 Edinburgh
 EH8 8BG

Title
**Craigpark Crescent
 Ratho Village**
 Proposal 2
 Appendix B

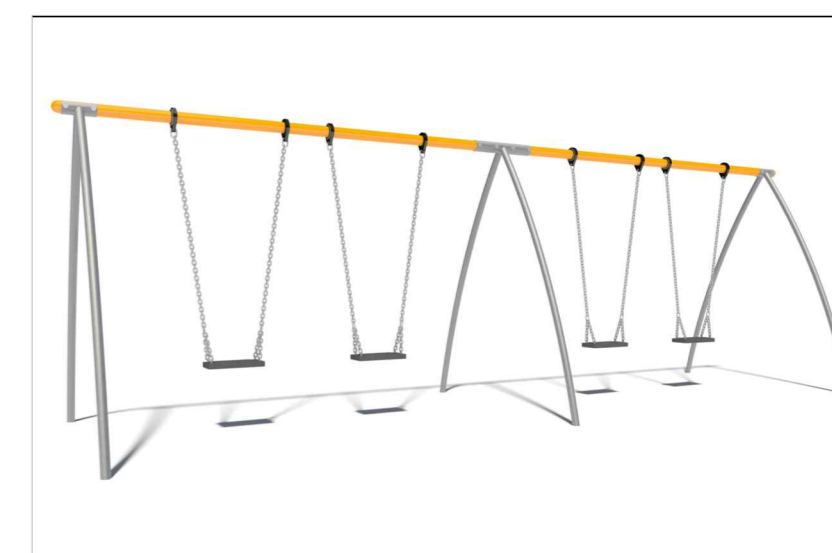
Nat: Grid Ref:	Scale
Date 07/04/2015	1:200
District South West	Drawn by A. Grevers
	Plan No: CPCR 1/02



Location Plan not to scale



Large dish roundabout all ages



Swing 2 cradle seats two flat seats



Clamber stack 1 for ages 4 plus



Balance Beam

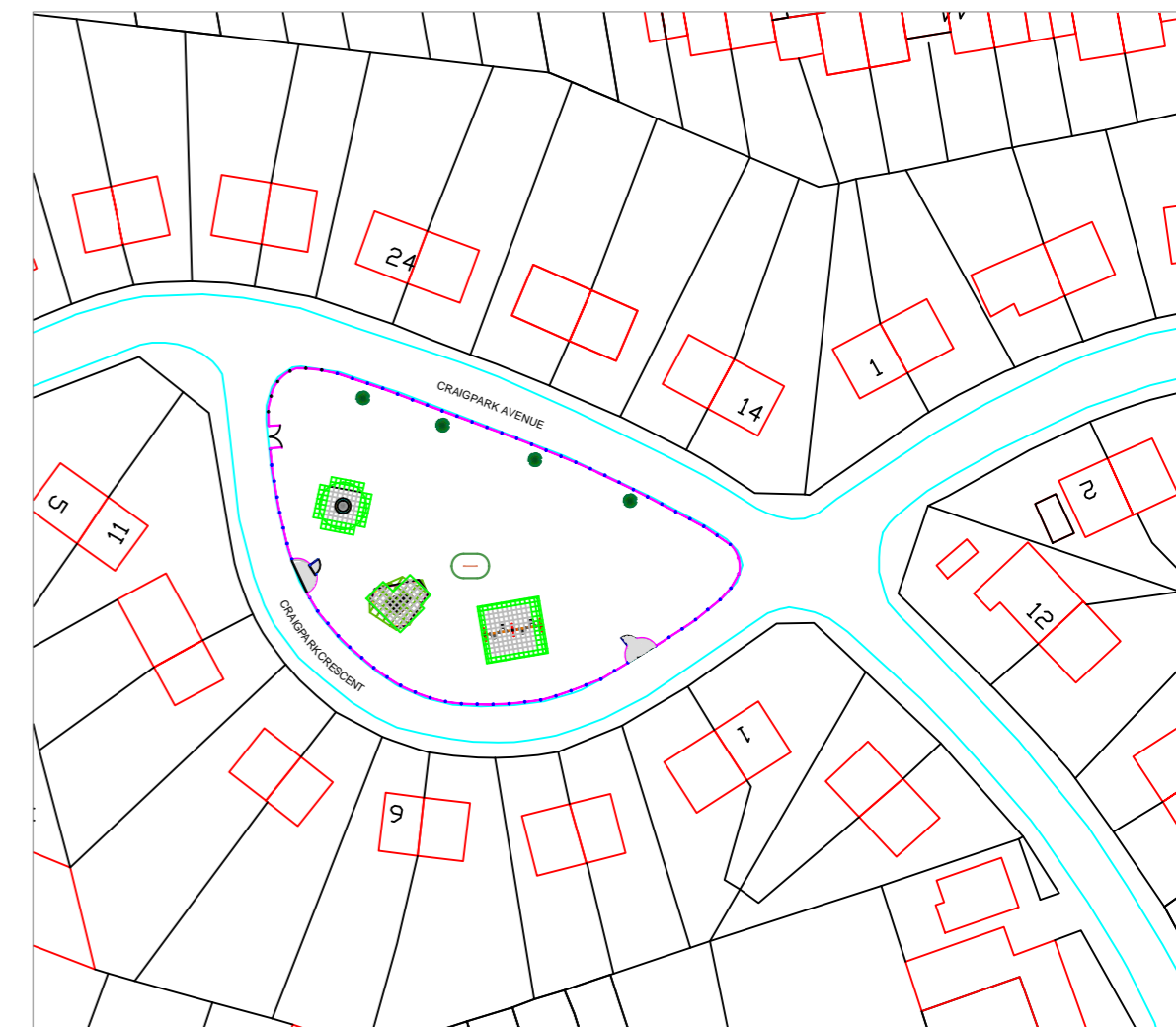
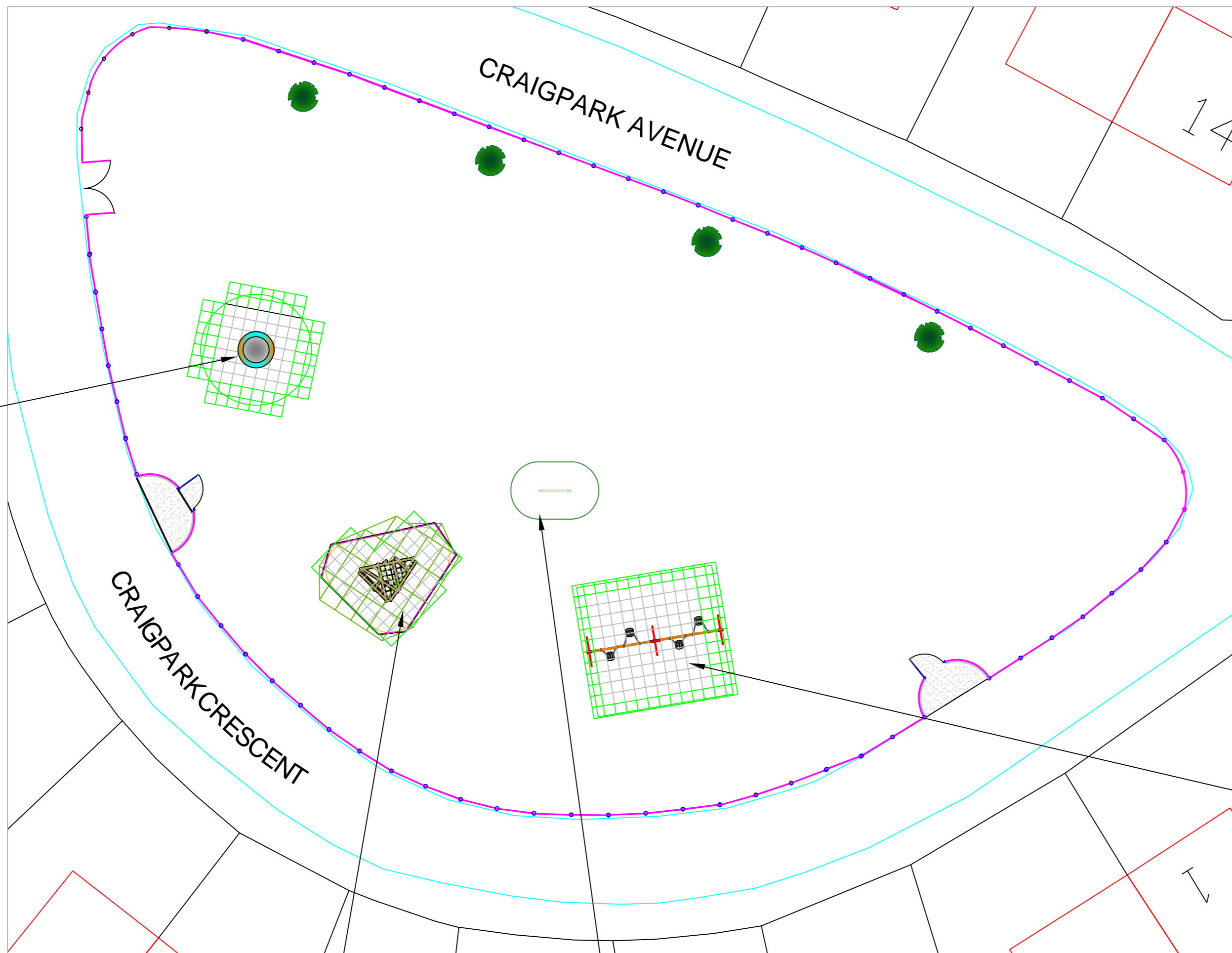
EDINBURGH
 THE CITY OF EDINBURGH COUNCIL
 SERVICES FOR COMMUNITIES
 PARKS and GREENSPACE
 Waverley Court
 4 East Market Street
 Edinburgh
 EH8 8BG

Title
**Craigpark Crescent
 Ratho Village**
 Proposal 3
 Appendix C

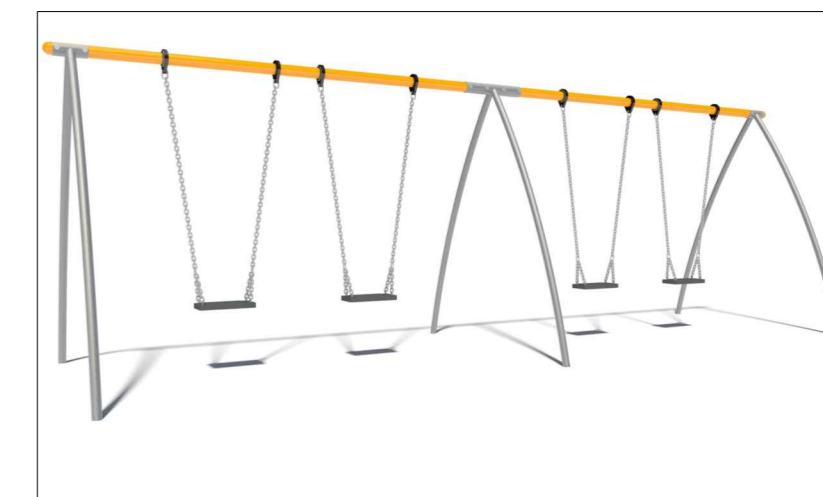
Nat: Grid Ref:	Scale 1:200
Date 21/05/2015	Drawn by J Galloway
District South West	Plan No:



Large dish roundabout all ages



Location Plan not to scale



Swing 2 cradle 2 flat seats



Clamber stack 1 for age 4 and above



balance beam

EDINBURGH
THE CITY OF EDINBURGH COUNCIL

SERVICES FOR COMMUNITIES
PARKS and GREENSPACE
Waverley Court
4 East Market Street
Edinburgh
EH8 8BG

Title
**Craigpark Crescent
Ratho Village**
Proposal 4
Appendix D

Nat: Grid Ref:	Scale 1:200
Date 26/05/2015	Drawn by J Galloway
District South West	Plan No: